



## Compass Close

**£595,000**

Set within beautifully maintained communal gardens and built by the highly regarded developers Banner Homes, this impressive second-floor apartment offers both space and style in a prime Edgware location.

Accessed via a secure gated entrance, the property features both stairs and lift access. Upon entering, you're welcomed by a spacious hallway leading to a modern kitchen, complete with integrated appliances and a convenient dining area.

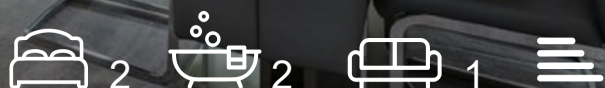
The generously proportioned lounge/dining room opens onto a private balcony, perfect for relaxing or entertaining. There are two well-sized double bedrooms and two contemporary bathrooms, including an en-suite and dressing area to the principal bedroom.

Additional benefits include an allocated parking space in a secure underground car park, along with visitor parking within the development.

### Viewing

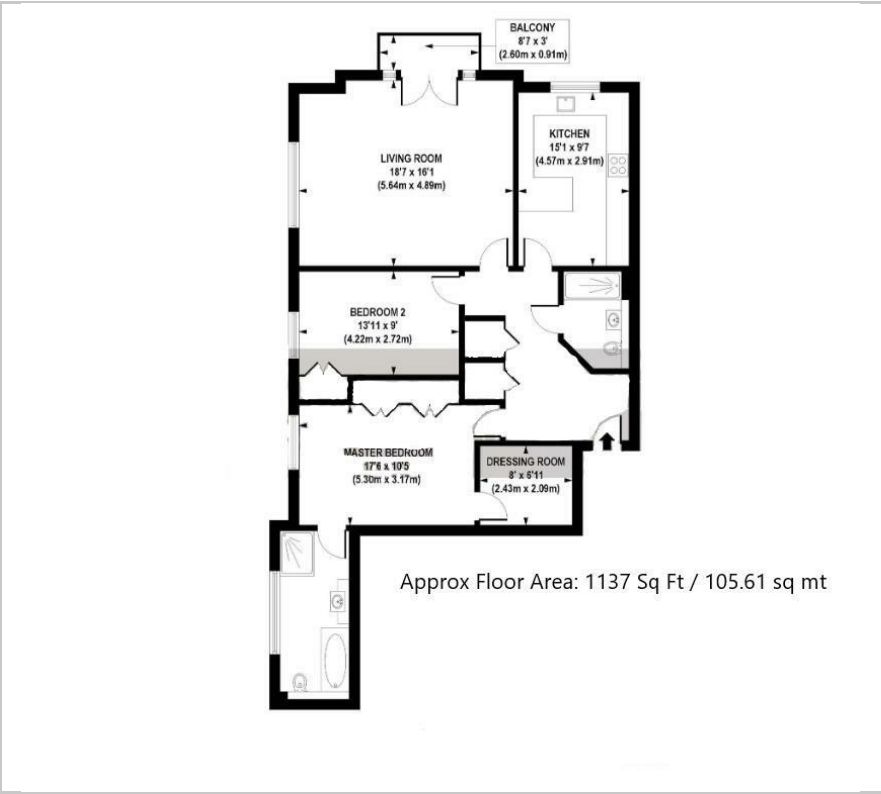
Please contact our Mill Hill Office on 02089590011 if you wish to arrange a viewing appointment for this property or require further information.

- LUXURY 2 DOUBLE BEDROOM FLAT - 1137 SQ FT
- MAIN BEDROOM WITH WALK IN WARDROBE AND EN-SUITE
- STUNNING KITCHEN / BREAKFAST ROOM
- SPACIOUS RECEPTION ROOM
- BALCONY
- SECURE UNDERGROUND PARKING
- CLOSE TO SHOPS
- LIFT
- GATED ENTRANCE

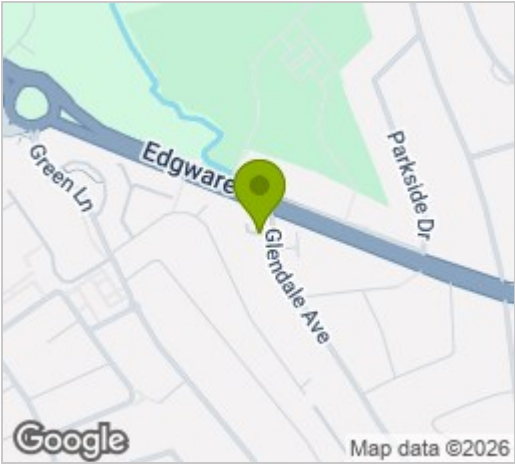




Floor Plan



Area Map



Energy Efficiency Graph



These particulars, whilst believed to be accurate are set out as a general outline only for guidance and do not constitute any part of an offer or contract. Intending purchasers should not rely on them as statements of representation of fact, but must satisfy themselves by inspection or otherwise as to their accuracy. No person in this firms employment has the authority to make or give any representation or warranty in respect of the property.